



FLEETWOODRV.COM

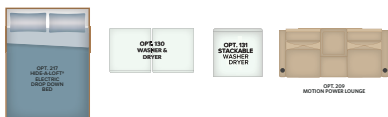
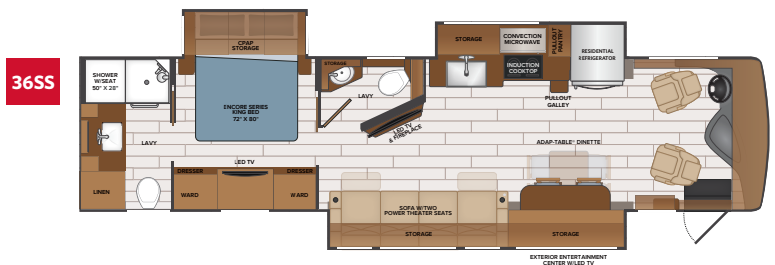
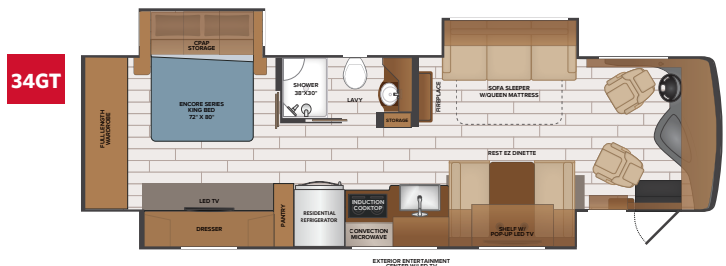
Frontier 36SS
Shown in Iron Man Graphics

TOP FEATURES

- Freightliner XCR chassis
- Cummins 6.7L diesel (340HP, 700 ft.lb of torque)
- V-Ride technology (enhanced stability)
- Freedom Sport foundation
- Aqua Hot® 250D - for unlimited hot water and comfortable even heat
- Exclusive wedged holding tanks (100 gal fresh, 65 gal grey, 45 gal black) Perfect for long & short trips
- French style luggage bay doors allow for easy access to storage compartments
- Freightliner® Custom Chassis tire pressure monitoring
- Washer/dryer available (34GT stackable, 36SS side by side)
- Optional Hide-A-Loft™ electric drop down queen bed
- Residential refrigerator, induction cook top, and convection microwave come as standard equipment
- Wifi Ranger Sky Pro 4 w/LTE, 300 watt solar panel, and cellular booster available on all floorplans
- Triple Slide Floorplans for extra roomand comfort.

AVAILABLE OPTIONS

- KING® Universal Satellite System
- Stackable Washer & Dryer (34GT)
- Washer & Dryer (36SS)
- Power Theater Seating (34GT)
- Hide-A-Loft™ Electric Drop Down Bed
- Roof Vent Rain Covers
- Central Vacuum System
- Dual 15M BTU A/C's
- Power Shore Cord Reel
- 1st Full Bay, 90" Slide Out Tray
- Connectivity Package (WiFi Ranger Sky4 Pro Pack, 300 watt Solar Panel & Cellular Booster)
- Safety Awareness Package: Mobileye® (Forward Collision Warning, Lane Departure Warning, Headway/Following Time, Pedestrian/Cyclist Collision Warning, Speed Limit Indicator) and Interior Safe-T-View



CADET

COVENTRY

SAND CASTLE

1 SOFA
2 LIVING ACCENT
3 BEDDING
4 COUNTERTOP
5 FLOORING
6 BACKSPLASH
7 VALANCE

CHASSIS

MODEL	34GT	36SS
Wheelbase	206"	242"
Front GAWR (lbs)	12,400	12,400
Rear GAWR (lbs)	20,000	20,000
GCWR (lbs)	33,000	33,000
Hitch Rating Weight (lbs)	10,000	10,000
Tongue Weight (lbs)	1,000	1,000
Fuel Capacity (gal)	100	100

DIMENSIONS & CAPACITIES

MODEL	34GT	36SS
Overall Length	35' 4"	38' 4"
Overall Height	12' 10"	12' 10"
Overall Width (Maximum)	102"	102"
Interior Height (Maximum)	84"	84"
Interior Width (Maximum)	96"	96"
Patio Awning Width	20' 0"	15' 0"
Interior Storage (cu. ft.)	183	151
Exterior Storage (cu. ft.)	135	190
Fresh Water Capacity (gal)	96	96
Grey Water Capacity (gal)	65	65
Black Water Capacity (gal)	45	45

FREEDOM BRIDGE® CHASSIS

34GT — 36SS
 Model: Freightliner® XCR Series
 Engine: Cummins ISB 6.7L
 Transmission: Allison® 2,500 MH 6-Speed w/ Electronic Shifter
 Alternator: Delcom Remy 160 Amp
 Torque: 700 lb.-ft. @ 1,600 RPM
 Horsepower: 340HP

EXTERIORS

BLUE RIDGE

GRANITE

IRONMAN

LITTLE ROCK